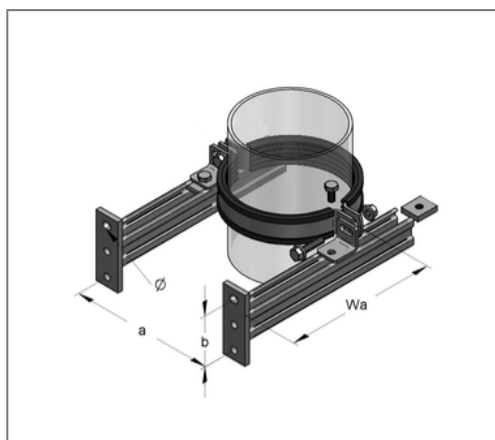
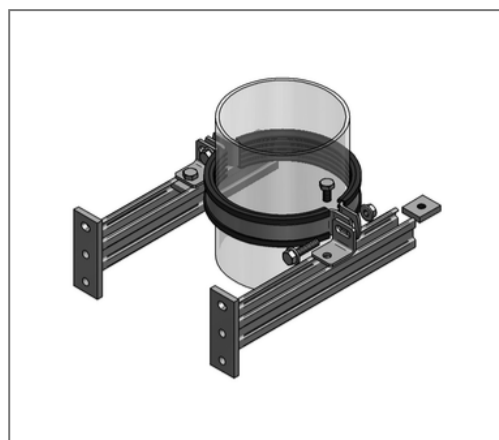


■ Fixpoint support for downstream piping Set SML DN 100 / 110 mm Wall distance 75 - 260 mm



Commercial details

Part no.	4501000
EAN/GTIN	4250928439543
Packing unit	1 pcs
Quantity unit	pcs
Weight	1,61 kg/pc
Product group	03-450
Price unit	1

QR code



Certification



Specification

Application	Brackets for the manufacture of a support for area
	sewage downpipes.

Technical data

Material	Steel
Surface	galvanized
Sound insulation lining	TPE
min. temperature resistance	-35 °C
max. temperature resistance	100 °C
Thickness material sound insulation lining	6 mm
Class	B2
Colour sound insulation lining	black
Material C-profile	S250JR

Product details

Outer pipe diameter	110 mm
Nominal pipe diameter	100 mm
Hole distance b	55 mm
Length console	263 mm
load F1	1,44 kN
load F2	0,72 kN
Console type	C-profile 35/21
Screw type	M10x20
Pipe clamp type	Maxima PSM

Product details

Distance measure a	165 mm
Type distance angle	Distance angle single 42x35x4
Type of threaded plate	M10 35x30
max. wall distance WA	260 mm
min. wall distance WA	75 mm
Elongated hole	11x15 mm