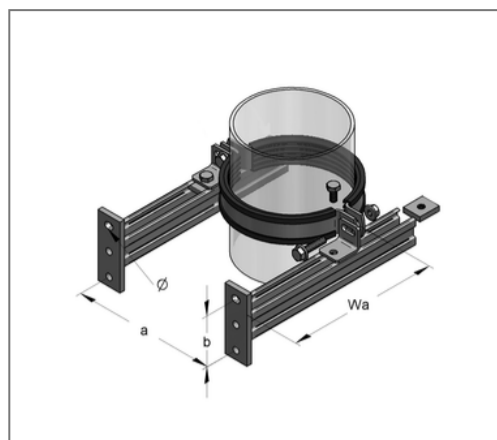
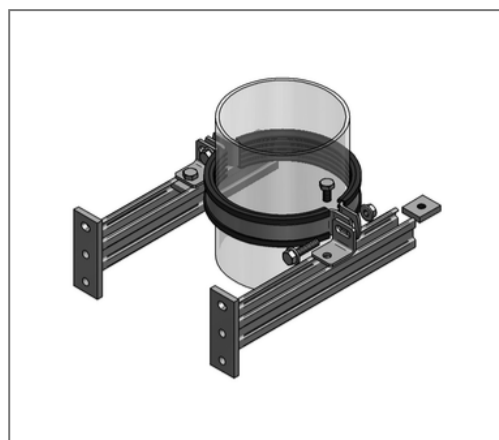


## ■ Fixpoint support for downstream piping Set SML DN 200 / 210 mm Wall distance 125 - 315 mm



### Commercial details

Part no.	45020045
EAN/GTIN	4250928448415
Packing unit	1 pcs
Quantity unit	pcs
Weight	4,08 kg/pc
Product group	03-450
Price unit	1

### QR code



### Certification



### Specification

Application area	Brackets for the manufacture of a support for sewage downpipes.
------------------	---

### Technical data

Material	Steel
Surface	galvanized
Sound insulation lining	TPE
min. temperature resistance	-35 °C
max. temperature resistance	100 °C
Thickness material sound insulation lining	6 mm
Class	B2
Colour sound insulation lining	black
Material C-profile	S235JR

### Product details

Outer pipe diameter	210 mm
Nominal pipe diameter	200 mm
Hole distance b	85 mm
Length console	315 mm
load F1	6,64 kN
load F2	3,32 kN
Console type	C-profile 45/45
Screw type	M12x30
Pipe clamp type	Maxima PSM

## Product details

Distance measure a	280 mm
Type distance angle	Angle 2-hole c-profile 45
Type of threaded plate	Toothplate S 36x20 M12
max. wall distance WA	315 mm
min. wall distance WA	125 mm
Elongated hole	14x20 mm