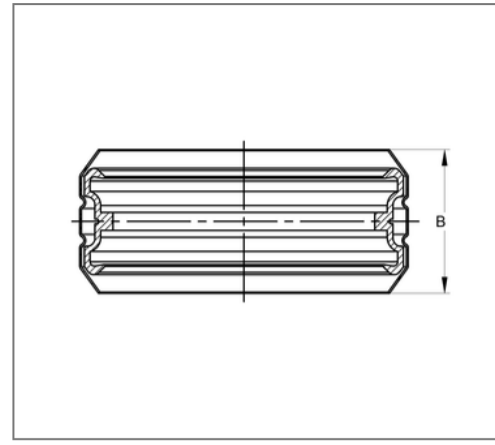
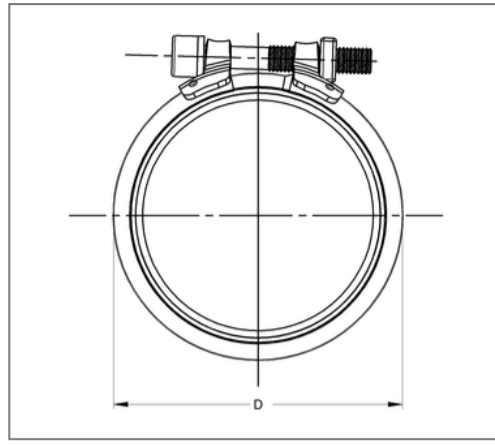


## ■ Connector SIMA RAPID DN 70 OD 78 mm



### Commercial details

|               |               |
|---------------|---------------|
| Part no.      | 447710070     |
| EAN/GTIN      | 4250928453662 |
| Packing unit  | 50 pcs        |
| Quantity unit | pcs           |
| Weight        | 0,120 kg/pc   |
| Product group | 03-447        |
| Price unit    | 1             |

### QR code



### Certification



### Specification

|                         |  |
|-------------------------|--|
| Application area        | plug connector for cast iron pipe and fittings |
| Strength class          | 8.8  |
| max. pressure load      | 0,5 bar  |
| Closure part connection | Welded connection                              |

### Technical data

|                             |                         |
|-----------------------------|-------------------------|
| Material                    | Ferritic chromium steel |
| Material type               | 1.452                   |
| Material turnbuckle         | Stainless steel         |
| Material type clamp lock    | 1.4301, 1.4510          |
| Material cuff               | Rubber EPDM             |
| min. temperature resistance | -35 °C                  |
| max. temperature resistance | 100 °C                  |
| Colour cuff                 | black                   |

### Product details

|                          |                |
|--------------------------|----------------|
| Width D                  | 91,6 mm        |
| Outer pipe diameter      | 78 mm          |
| Width pipe clamp strap B | 38,6 mm        |
| Nominal pipe diameter    | 70 mm          |
| Screw type DIN 4762      | hexagon socket |
| Connector type           | Plug connector |