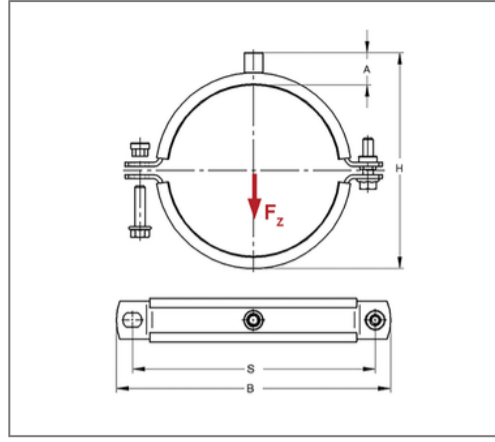
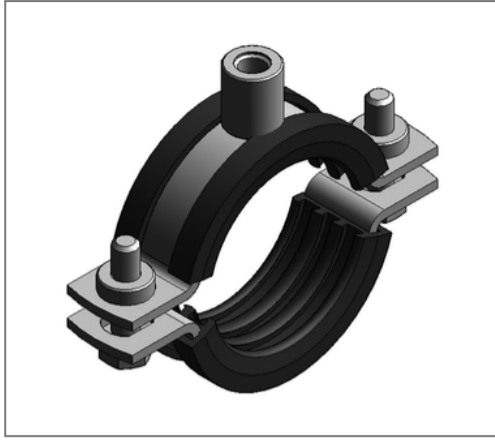


■ Pipe clamp Maxima PSM 25x3 15 - 19 mm M8/M10 TPE



Commercial details

| | |
|---------------|---------------|
| Part no. | 0068819 |
| EAN/GTIN | 4250928402363 |
| Packing unit | 1 pcs |
| Quantity unit | pcs |
| Weight | 0,195 kg/pc |
| Product group | 01-006 |
| Price unit | 100 |

QR code



Certification



Specification

| | |
|------------------|------------------------------|
| Application area | Pipe clamp for fixing pipes. |
| Specification | two-part |
| Connection | M8/M10 |
| Closure | Pendulum stick nuts |

Technical data

| | |
|-------------------------|-----------------|
| Material | Steel |
| Material type | S235 |
| Surface | galvanized |
| Insulation thickness | 6 mm |
| Temperature resistance | -35 °C - 100 °C |
| Sound insulation lining | TPE |

Product details

| | |
|--------------------------------|------------|
| Center distance S | 57 mm |
| Connection height A | 30 mm |
| Width B | 81 mm |
| Colour sound insulation lining | black |
| Höhe H | 54 - 58 mm |
| Material dimension | 25x3 mm |
| load F_z | 1,5 kN |
| Clamping range | 15 - 19 mm |
| Closure screw | M8 |

Remark

| | |
|---------------|--|
| Delivery time | 5 working days ex works |
| Notice | With thread M16 or sleeve 1/2 Inch exchange and return are excluded. |