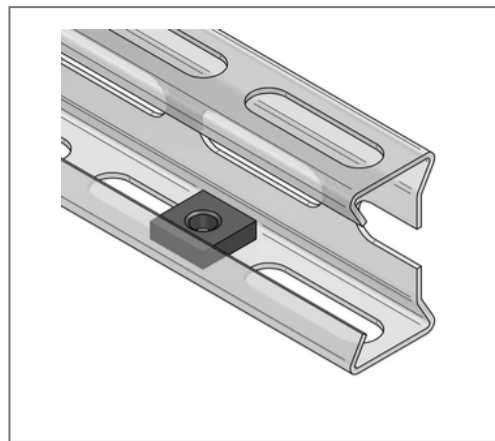
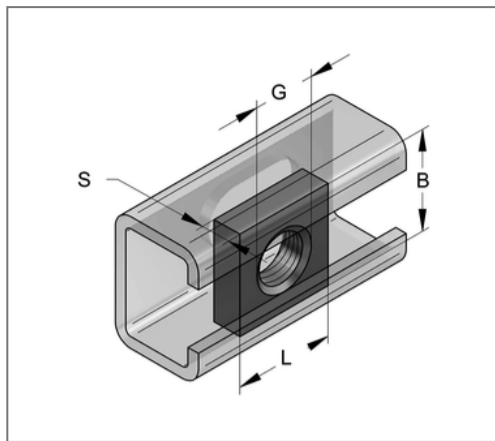
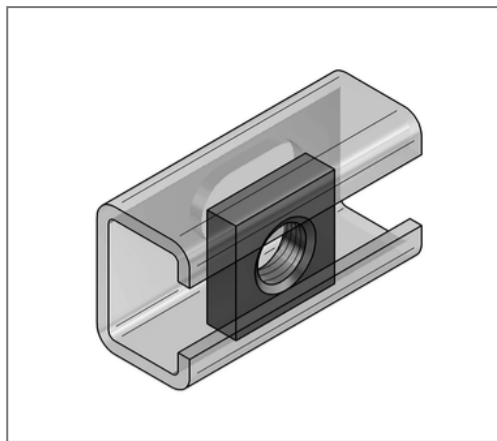


■ Threaded plate M10 square 17x17 mm galv.



Commercial details

| | |
|---------------|---------------|
| Part no. | 0740039 |
| EAN/GTIN | 4250928417114 |
| Packing unit | 100 pcs |
| Quantity unit | pcs |
| Weight | 0,0090 kg/pc |
| Product group | 02-074 |
| Price unit | 100 |

QR code



Technical data

| | |
|---------------|------------|
| Material | Steel |
| Material type | S235 |
| Surface | galvanized |

Product details

| | |
|----------------------|----------------------------|
| Loading capacity | see loads in the catalogue |
| Length L | 17 mm |
| Width B | 17 mm |
| Material thickness S | 5 mm |
| Thread G | M10 |
| Profile type | LP50 |
| Shape | square |