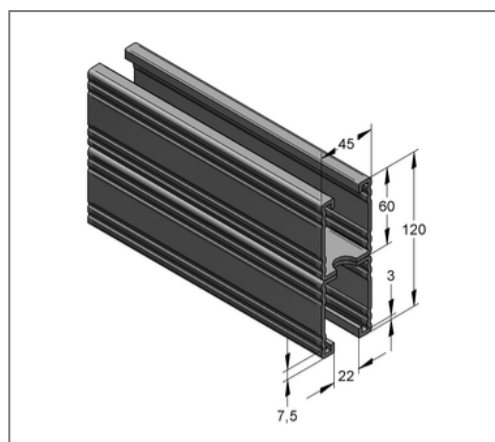
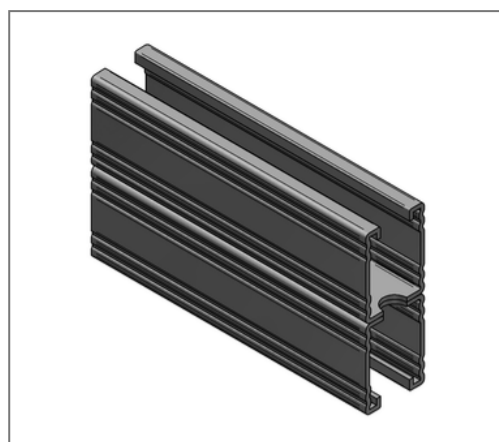


## ■ Profile rail C-profile double 45 / 120 / 3 mm L= 6 m hot-dip galv.



### Commercial details

|               |               |
|---------------|---------------|
| Part no.      | 0810833       |
| EAN/GTIN      | 4250928419491 |
| Packing unit  | 24 m          |
| Bundle        | 120 m         |
| Quantity unit | m             |
| Weight        | 8,63 kg/m     |
| Product group | 02-082        |
| Price unit    | 1             |

### QR code



### Certification



### Specification

|                    |   |
|--------------------|---|
| Application area   | Medium weight mounting rail with quick connection option.       |
| Specification      | Toothed C-profile rail. double rails are perforated and welded. |
| Type of attachment | form-locking connections and shear hole haunch connections      |

### Technical data

|               |                    |
|---------------|--------------------|
| Material      | Steel              |
| Material type | S235               |
| Surface       | hot-dip galvanized |

### Product details

|  |                        |
|--|------------------------|
| Width  | 45 mm                  |
| Height   | 120 mm                 |
| Thickness                                      | 3 mm                   |
| Length   | 6 m                    |
| Hole-Ø   | 18,00 mm               |
| Elongated hole                                 | 14x45 mm               |
| Expansion elongated hole                       | 18,0 mm                |
| Area (least cross section of the profile rail) | 9,04 cm <sup>2</sup>   |
| Axial angular impulse $I_Y$                    | 119,76 cm <sup>4</sup> |
| Axial angular impulse $I_Z$                    | 34,31 cm <sup>4</sup>  |
| Grid dimension                                 | 105,0 mm               |
| Rail slot width                                | 22 mm                  |
| Centroid distance $e_o$                        | 6,00 cm                |
| Centroid distance $e_u$                        | 6,00 cm                |
| Centroid distance $e_z$                        | 2,25 cm                |

## Remark

|                                    |                       |
|------------------------------------|-----------------------|
| Notice                             | Full bundles, only    |
| Radius of inertia $i_y$            | 3,64 cm               |
| Radius of inertia $i_z$            | 1,95 cm               |
| Section modulus $W_{<sub>Y</sub>}$ | 19,96 cm <sup>3</sup> |
| Section modulus $W_{<sub>Z</sub>}$ | 15,25 cm <sup>3</sup> |